

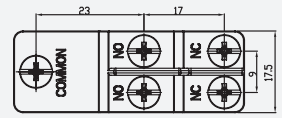
通用型微动开关 ZY-10 系列

特点

操作速度	0.01毫米-1米/秒
操作频率	机械: 240 次/分; 电气: 20 次/分
绝缘电阻	>100MΩ@500V DC
接点电阻	<15mΩ (初值)
额定电流/电压	10A 1/2HP 125/250VAC, 2A 480VAC, 0.5A 125VDC, 0.25A 250VDC
耐压值	同级端子间 1,000 VAC, 50/60 Hz 1分钟 端子对地或对无载金属间 2,500 VAC, 50/60 Hz 1分钟
寿命	机械: 5 × 10 ⁵ 次; 电气: 1 × 10 ⁵ 次
环境温度	-40~+80°C (-40~+176°F) 不结冰
湿度	标准款: 35~85%RH/防滴款 (后缀-55): 35~95%RH
防护等级	标准款: IP00/防滴款 (后缀-55): IP64

动作特性定义

OF 动作力	PT 动作行程 (预行程)
RF 复位力	MD 距差
OT 超行程	OP 动作位置
TT 总行程	

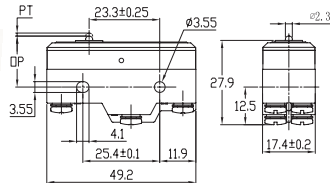


额定指标

工作电压		非感性负载 (A)		感性负载 (A)			
		阻性负载		灯泡负载		电动机负载	
		NC	NO	NC	NO	NC	NO
串联	AC125/250	10	4	2	6	5	2.5
		10	2.5	1.5	6	3	1.5
	DC 30/125/250	10	4	2	6	6	3
		1	1	1	0.1	0.1	0.1
		0.6	0.6	0.6	0.05	0.05	0.05
并联	AC125/250	6	3	1.5	4	4	2
		6	2.5	1.25	4	2	1
	DC 30/125/250	6	4	2	4	6	3
		0.6	0.6	0.6	0.1	0.1	0.1
		0.3	0.3	0.3	0.05	0.05	0.05

安装尺寸图 单位: mm

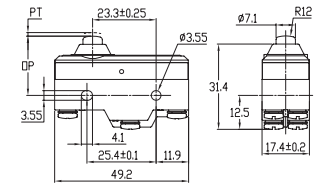
ZY-10G



动作特性

- OF_{max} 3.43N
- RF_{min} 1.12N
- PT_{max} 0.4mm
- OT_{min} 0.13mm
- MD_{max} 0.05mm
- OP 15.9±0.4mm

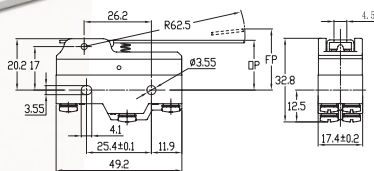
ZY-10GD



动作特性

- OF_{max} 3.43N
- RF_{min} 1.12N
- PT_{max} 0.4mm
- OT_{min} 1.6mm
- MD_{max} 0.05mm
- OP 21.5±0.5mm

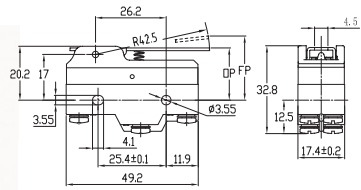
ZY-10GW



动作特性

- OF_{max} 0.69N
- RF_{min} 0.14N
- PT_{max} 10mm
- OT_{min} 5.6mm
- MD_{max} 2mm
- OP 19.1±0.7mm
- FP_{max} 28.2mm

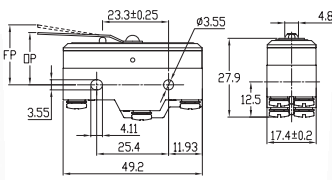
ZY-10GW1



动作特性

- OF_{max} 1.03N
- RF_{min} 0.21N
- PT_{max} 6.6mm
- OT_{min} 3.7mm
- MD_{max} 0.85mm
- OP 18.4±0.5mm
- FP_{max} 24.5mm

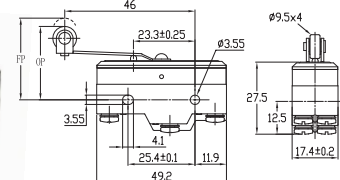
ZY-10GL



动作特性

- OF_{max} 1.47N
- RF_{min} 0.14N
- PT_{max} 4mm
- OT_{min} 1.6mm
- MD_{max} 1.3mm
- OP 17.4±0.8mm
- FP 20.6mm

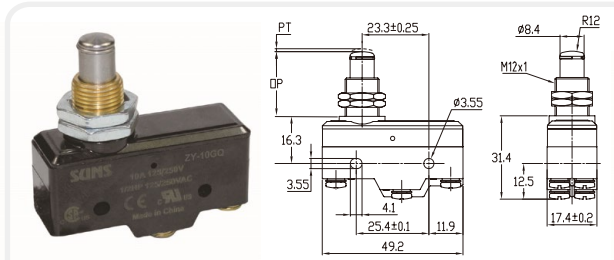
ZY-10GL2



动作特性

- OF_{max} 1.47N
- RF_{min} 0.14N
- OT_{min} 1.6mm
- PT_{max} 4mm
- MD_{max} 1.3mm
- OP 28.6±0.8mm
- FP 31.8mm

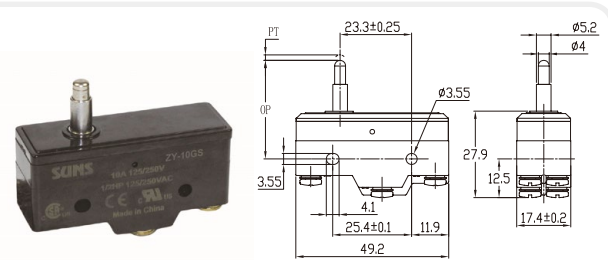
通用型微动开关 ZY-10 系列



ZY-10GQ

动作特性

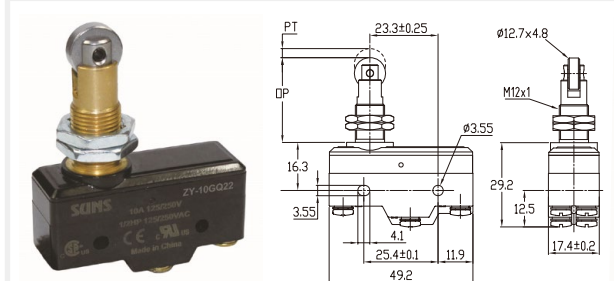
- OF_{max} 3.43N
- RF_{min} 1.12N
- PT_{max} 0.4mm
- OT_{min} 5.5mm
- MD_{max} 0.05mm
- OP 21.8±0.8mm



ZY-10GS

动作特性

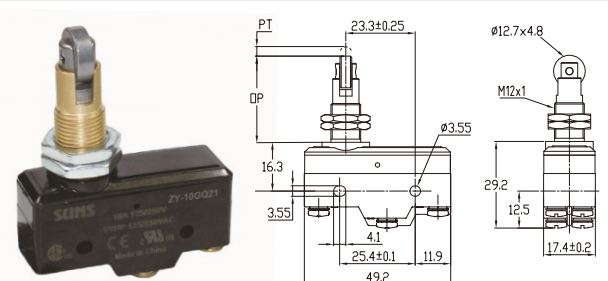
- OF_{max} 3.43N
- RF_{min} 1.12N
- PT_{max} 0.4mm
- OT_{min} 1.6mm
- MD_{max} 0.05mm
- OP 28.2±0.6mm



ZY-10GQ22

动作特性

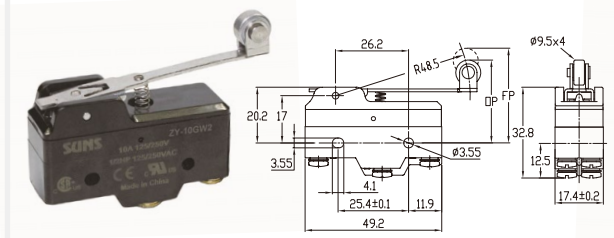
- OF_{max} 3.43N
- RF_{min} 1.12N
- PT_{max} 0.4mm
- OT_{min} 3.58mm
- MD_{max} 0.05mm
- OP 33.4±1.2mm



ZY-10GQ21

动作特性

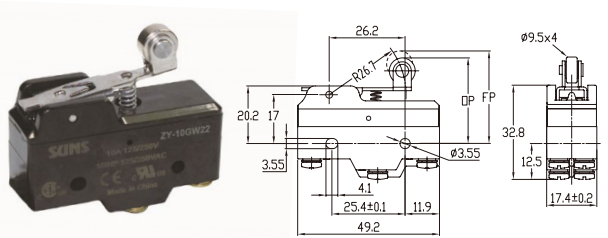
- OF_{max} 3.43N
- RF_{min} 1.12N
- PT_{max} 0.4mm
- OT_{min} 3.58mm
- MD_{max} 0.05mm
- OP 33.4±1.2mm



ZY-10GW2

动作特性

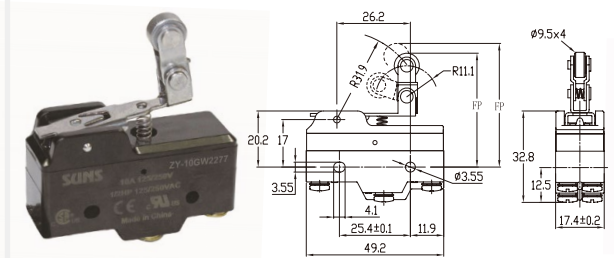
- OF_{max} 0.98N
- RF_{min} 0.21N
- PT_{max} 7.1mm
- OT_{min} 4mm
- MD_{max} 1.02mm
- FP_{max} 36.5mm
- OP 30.2±0.8mm



ZY-10GW22

动作特性

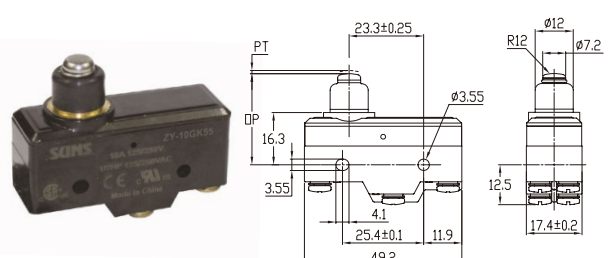
- OF_{max} 1.57N
- RF_{min} 0.41N
- PT_{max} 2.7mm
- OT_{min} 2.4
- MD_{max} 0.8mm
- FP_{max} 32.5mm
- OP 30.2±0.4mm



ZY-10GW2277

动作特性

- OF_{max} 1.67N
- RF_{min} 0.41N
- PT_{max} 3mm
- OT_{min} 2.4mm
- MD_{max} 0.8mm
- FP_{max} 43.5mm
- OP 41.3±0.8mm

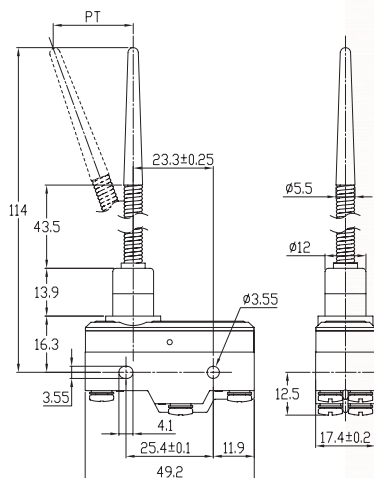


ZY-10GK

动作特性

- OF_{max} 5.3N
- RF_{min} 1.11N
- OT_{min} 1.6mm
- PT_{max} 2.3mm
- MD_{max} 0.06mm
- OP 28.2±0.5mm

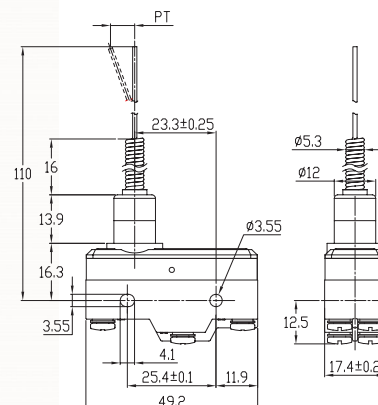
通用型微动开关 ZY-10 系列



ZY-10GN66

动作特性

- OF_{max} 0.7N
- PT_{max} 25mm



ZY-10GN69

动作特性

- OF_{max} 0.7N
- PT_{max} 25mm